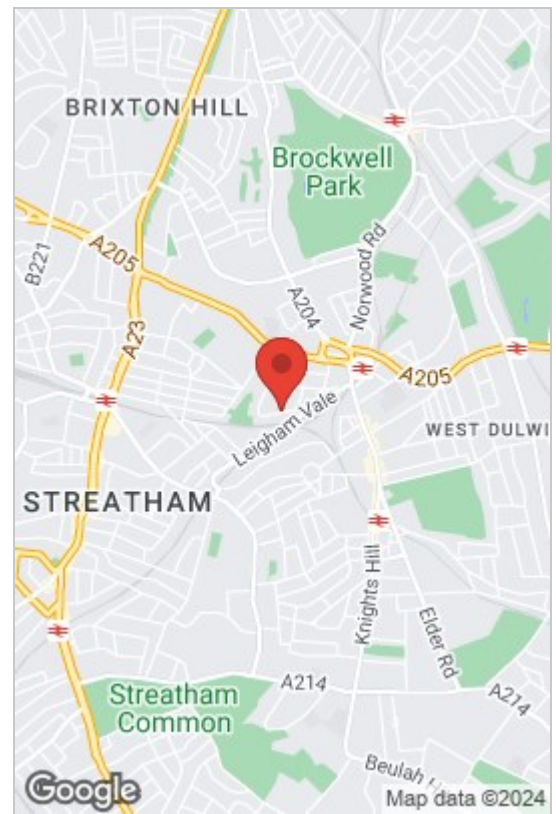




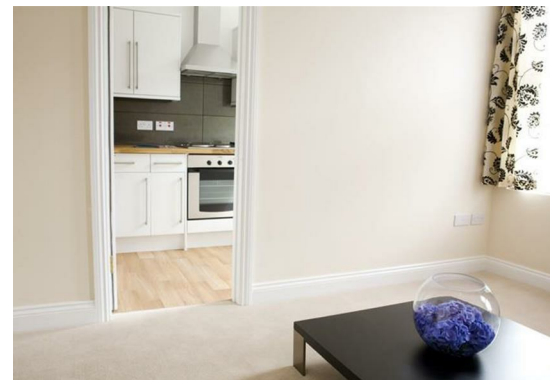
Kingsmead Road, London, SW2 3JD
£1,775 Per Calendar Month





- First Floor
- Lounge
- Washing Machine & Dishwasher
- Newly Decorated
- 2 Double Bedrooms
- Modern Fitted Kitchen
- Gas Central Heating
- New carpets

Newly decorated first floor 2 bedroom flat in a residential road with no parking permits required. Finished to an excellent standard throughout with 2 double bedrooms, bathroom with shower, lounge, fitted kitchen with washing machine, dishwasher, oven & hob and Fridge/Freezer. New carpets just fitted. Early viewing recommended as works have just ben completed.



Council Tax Band: C

Energy Efficiency Rating			Environmental Impact (CO ₂) Rating		
	Current	Potential		Current	Potential
Very energy efficient - lower running costs			Very environmentally friendly - lower CO ₂ emissions		
(92 plus) A			(92 plus) A		
(81-91) B			(81-91) B		
(69-80) C			(69-80) C		
(55-68) D			(55-68) D		
(39-54) E			(39-54) E		
(21-38) F			(21-38) F		
(1-20) G			(1-20) G		
Not energy efficient - higher running costs			Not environmentally friendly - higher CO ₂ emissions		
England & Wales	EU Directive 2002/91/EC		England & Wales	EU Directive 2002/91/EC	

These particulars, whilst believed to be accurate are set out as a general outline only for guidance and do not constitute any part of an offer or contract. Intending purchasers should not rely on them as statements of representation of fact, but must satisfy themselves by inspection or otherwise as to their accuracy. No person in this firms employment has the authority to make or give any representation or warranty in respect of the property.